

Wireless Charger User Manual

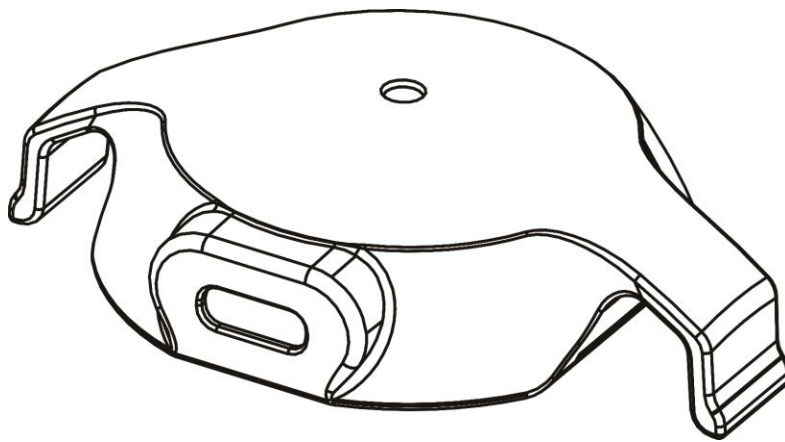


TABLE OF CONTENTS

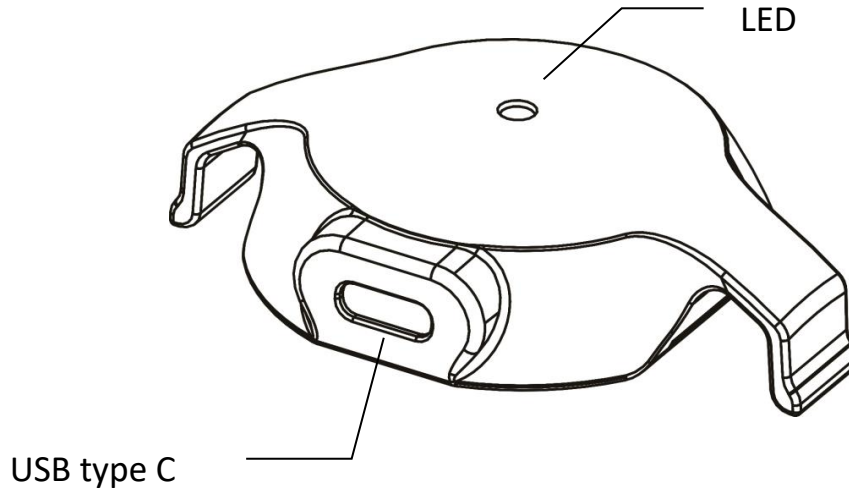
1 DEVICE OUTLET..... 3

2 CHARGING..... 4

3 REGULATORY INFORMATION 6

1 DEVICE OUTLET

The wireless charger can provide up to 5W transmission capacity and enables powering or charging for any WPC- Qi certified products



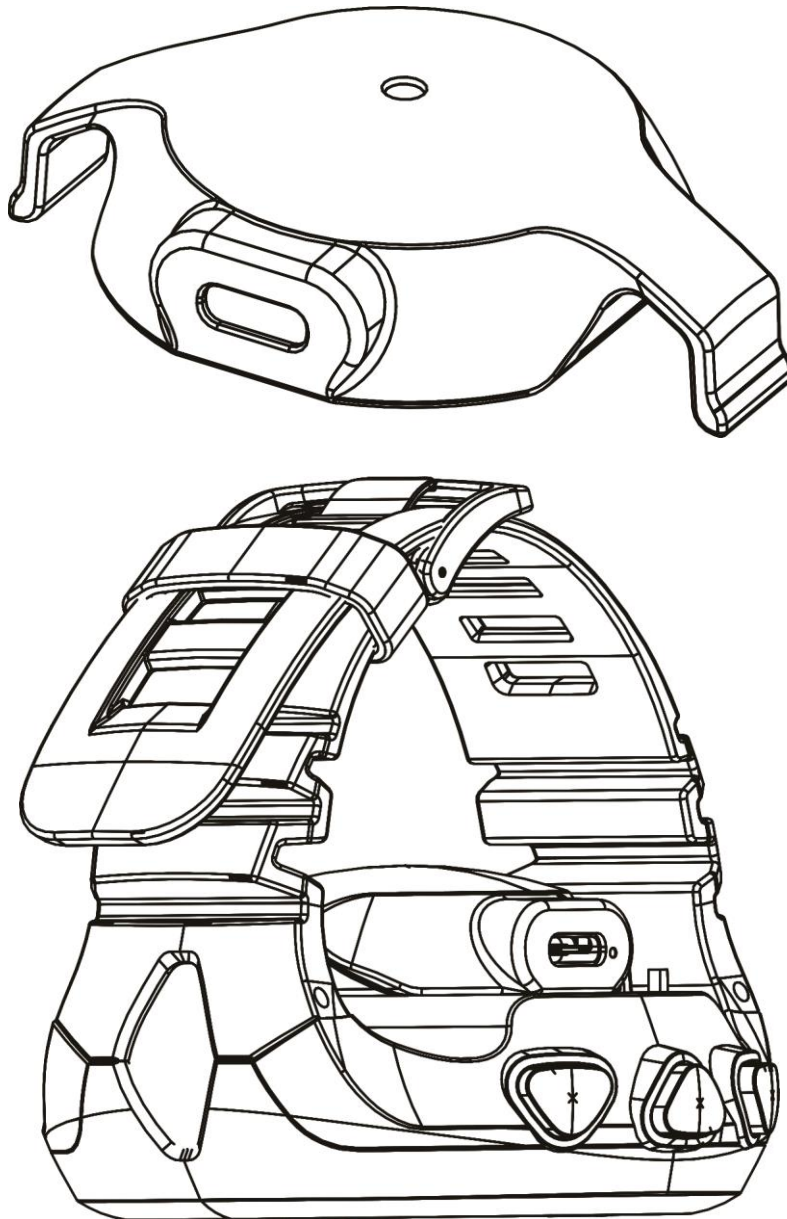
- LED indication scheme

LED (Blue)	Operational Status	
	Power ON	Charging
	3 second Blink Fast	Blink Slow

- Specification

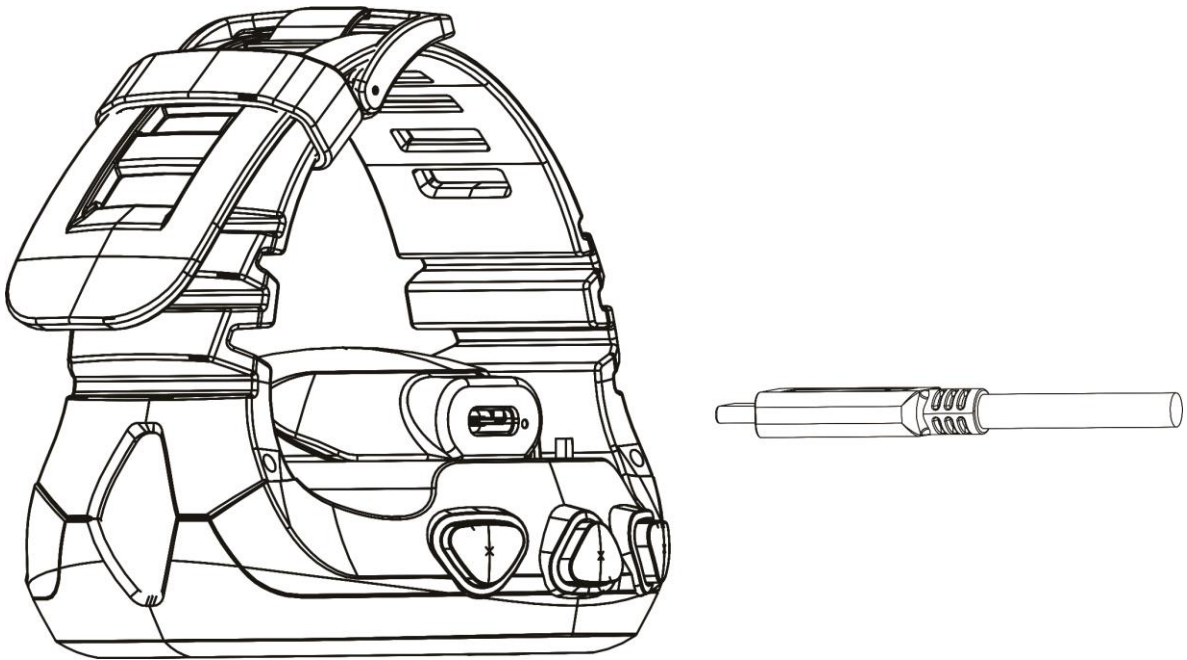
Rating	Input:	5V	Volts:	1.5 A (max)
	Output:	5V	Volts:	1.0 A
Operation Frequency	113 KHz ~ 205KHz			
Dimension:	45.31 mm x 62.34 mm x 18.36 mm			
Weight:	16.5 gram			

2 CHARGING



Follow these steps to charge the dive watch battery via wireless charger:

- 1) Firstly plug the wireless charger's power adapter into a power outlet and the USB type C cable into the wireless charger. The indicator light on the base will flash when you first connect the cable.
- 2) When you're ready, place your dive watch on the wireless charger.
- 3) In order for it to charge properly, the device's back should make contact with the wireless charger, and the device should be centered. Wireless charger should be closed and also have their back facing the charging pad.



- 4) The watch charges wirelessly when mounted on the included dock and the screen show "CHARGING"
- 5) To stop charging, just separate the two devices from each other. The wireless charger feature will automatically turn off after 60 seconds when no other device is detected.

Note:

- 1) Do not expose the wireless charger to water because the wireless charger does not have same water-resistance certification as your Watch.
- 2) Dive Mode functions are not available while the watch is charging.
- 3) Wireless chargers quickly lose efficiency when the transmission and receiver coils are not aligned properly or there is too large an air gap. Ensure the watch is flat against the charging dock for the fastest, most efficient charge.

FCC Warning

This device complies with part 15 of the FCC Rules. Operation is subject to the following two conditions: (1) This device may not cause harmful interference, and (2) this device must accept any interference received, including interference that may cause undesired operation.

Any Changes or modifications not expressly approved by the party responsible for compliance could void the user's authority to operate the equipment.

Note: This equipment has been tested and found to comply with the limits for a Class B digital device, pursuant to part 15 of the FCC Rules. These limits are designed to provide reasonable protection against harmful interference in a residential installation. This equipment generates uses and can radiate radio frequency energy and, if not installed and used in accordance with the instructions, may cause harmful interference to radio communications. However, there is no guarantee that interference will not occur in a particular installation. If this equipment does cause harmful interference to radio or television reception, which can be determined by turning the equipment off and on, the user is encouraged to try to correct the interference by one or more of the following measures:

- Reorient or relocate the receiving antenna.
- Increase the separation between the equipment and receiver.
- Connect the equipment into an outlet on a circuit different from that to which the receiver is connected.
- Consult the dealer or an experienced radio/TV technician for help.

The FCC certification of this device refers to RF exposure testing performed in typical operating conditions, where a person is no closer than 20 centimeters from the device surface at all times, except for non-repetitive patterns with transient time intervals in the order of a second. Only in the stated conditions, the device is shown to fully comply with the FCC RF Exposure requirements of KDB 447498.